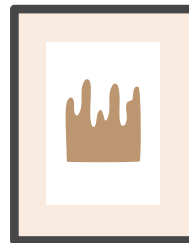
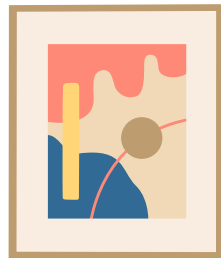
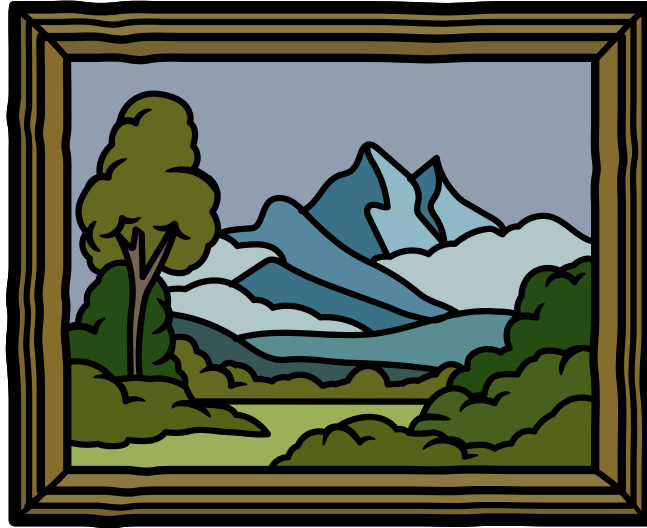
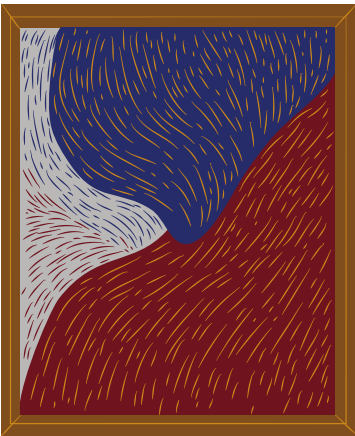


Lehigh Valley
Habitat for Humanity®
ReStore



ART AUCTION

Wednesday, February 22nd 10 AM to
Saturday, March 4th 2 PM



Habitat Lehigh Valley ReStore
1053 Grape St, Whitehall PA 18052

Signed Salvador Dali Poster



This poster is by the Spanish Surrealist painter and printmaker Salvador Dali (1904 - 1989), known for his dreamlike imagery. He wrote, "I am the first to be surprised and often terrified by the images I see appear upon my canvas." His most famous work, "The Persistence of Memory" (1931), is one of the most famous Surrealist paintings.

This poster contains an image by Dali titled "Spring Explosive" and shows flowers with dabs of paint, and loosely rendered figures in the background. This is an original commemorative poster from the 1974 inauguration of the Dali Theatre Museum in the artist's hometown of Figueras, Spain. The poster is signed (on the left) and dated 1965 in the plate, published in the U.S. by Phyllis Lucas in 1974. The poster is signed in pencil on the right and numbered in pencil 29/100. The poster measures 38.75" x 21" and is framed under glass.

A preliminary auction estimate of \$500-\$800 was provided to ReStore by a fine art specialist at Rago in Lambertville, NJ.



William Gothard Halloween Painting

This humorous and colorful oil painting with a Halloween theme is by the artist William Harry Gothard (1932 – 2015).

This lively oil painting is a self portrait of the bearded Mr. Gothard as a Wizard, holding a wand and surrounded by Halloween icons. Rather than dark and spooky, this painting shows the fun side of Halloween, and has become a staff favorite.

William Gothard was born in Brooklyn New York, and made a living drawing graphs for companies, but also had a art studio at his home in Sciota, Monroe County. He referred to himself as a “Romantic Expressionist”. His subjects included bar scenes, jazz musicians, and portraits of family and friends as well as this charming self portrait.

In a wooden frame, the painting measures 25” x 24” and is valued at \$300. In 2005, The Allentown Art Museum featured his work at a one man show co-curated by Dr. Christine Oaklander.



Grapes Painting by Philip Fishbourne Wharton

This is an antique oil painting of grapes signed “Wharton” (lower right) in an ornate original gold frame.

The donor said it was painted about 1860 in Philadelphia. Our research found a Philip Fishbourne Wharton (1841 – 1880), who studied at the Pennsylvania Academy of Fine Arts, and was known to paint primarily civil war genre and portraits. Perhaps it’s his, but we can’t be sure. Without better examples of his work, it’s a guess. Regardless, it’s a well done realistic grapes painting.

Image is 13.75 x 7, frame is 19 x 12.



Italian Seascape by Agnese Torrielli

This moonlit seascape is by the Italian painter Agnese Torriell. Her painting features a night view of an Italian fishing village with three rowboats resting on the beach. The dusky colors are rich and moody, with some brightly lit beach bars, while the lights of a neighboring town glow across the bay.

It is signed lower left, undated, and framed, measuring 24" high x 48" wide.



Thomas L. Lewis Mountain Landscape

This western landscape is signed (lower right) Lewis. This oil features a mountain cabin tucked behind tall western pines, at the edge of a river overlooked by imposing mountains. His brushwork is loose and expressive, the colors vivid and the effect charming.

Thomas L Lewis (1907 – 1978) was a professional painter by age 19, specializing in detailed Southwest landscapes, and later became an art gallery owner in Taos, New Mexico.

The landscape is framed 24 high” x 48 long”.



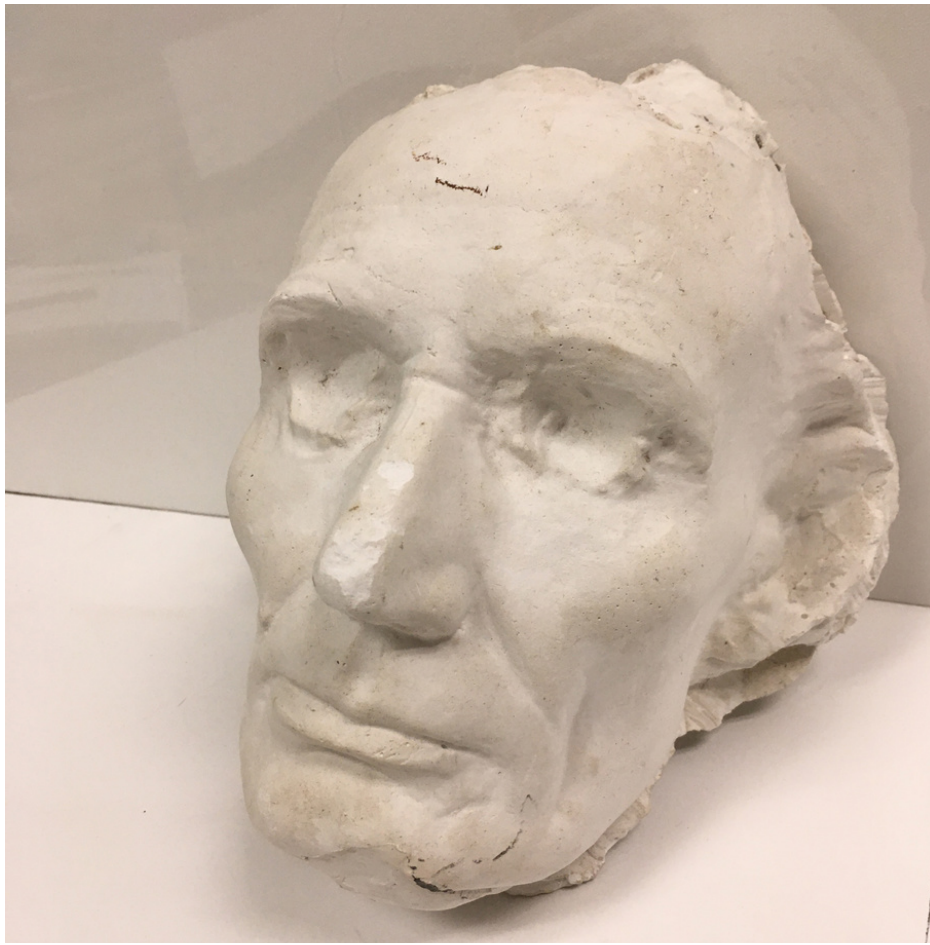
Authors Engraving

RARE 1866 Engraving: Authors of the US

This impressive engraving depicts the most famous American authors of the mid nineteenth century. The image was drawn and published by Thomas Hicks, a native of Bucks County and a prominent NYC portrait painter. The engraving was by Alexander Hay Ritchie, one of the best historic print engravers of the mid-nineteenth century.

The balcony contains statues of Goethe, Shakespeare and Dante. Other authors in attendance are Edgar Allen Poe, Washington Irving, James Fenimore Cooper, Margaret Fuller, Harriet Beecher Stowe, Henry Wordsworth Longfellow, William Cullen Bryant and Ralph Waldo Emerson.

The print measures 22 x 37.5, and is matted and framed.

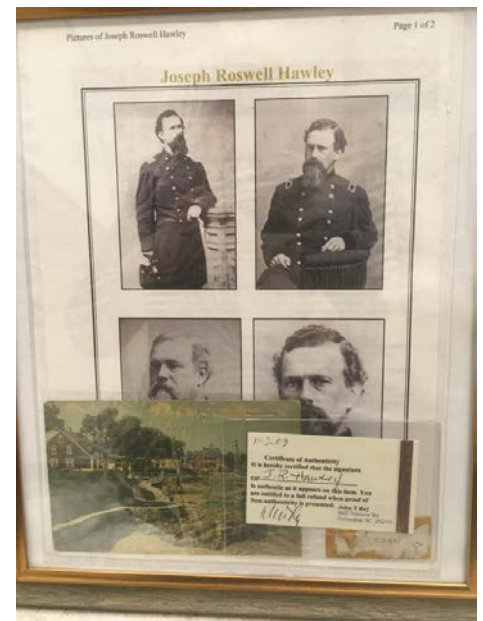
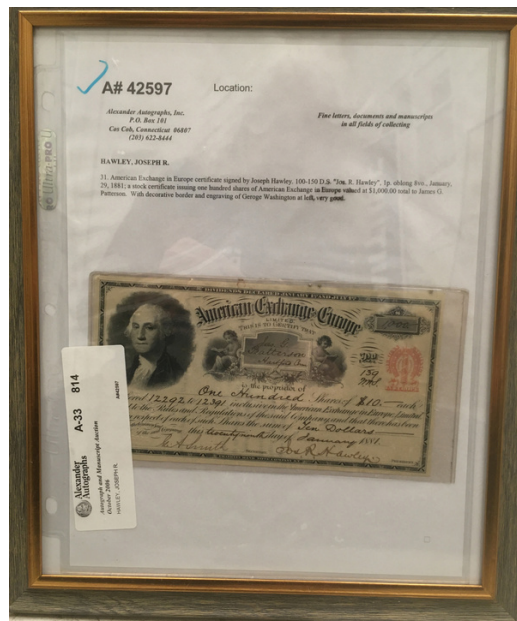
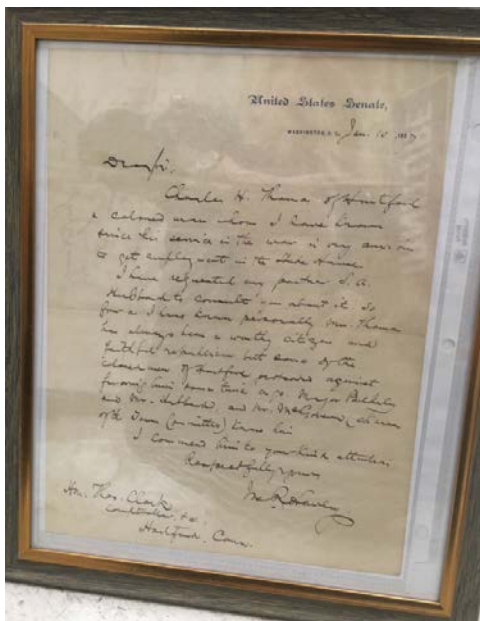


Abraham Lincoln Plaster Cast

This life-sized plaster cast of Abe Lincoln's head by originally created by Leonard W Volk. This is a replica of Abe's actual nose and chin and forehead.

Chicago sculptor Leonard W. Volk made a life mask of Abraham Lincoln on March 31, 1860, before Lincoln's nomination as the Republican presidential candidate. Volk encased Lincoln's face and ears in plaster, allowed the plaster to dry for an hour, and then had Lincoln gradually work the mold off without breaking it. Lincoln called the mold making "a process that was anything but agreeable." The mold, however, became the basis for several busts and statuettes by Volk that provide a "from life" portrait of the 16th president.

Unsigned.



Civil War Memorabilia of General Joseph Roswell Hawley Silver Certificate Photo US Congress Letter

These three items will be sold as one lot, and include General Joseph Roswell Hawley's signature (certified by an autograph specialist), photos and a hand written letter.

Hawley (1826 – 1905) was admitted to the bar in 1850, and served in 13 battles during the Civil War, where Hawley rose to the rank of Major General, then entered politics and was elected Governor of Connecticut. He was appointed to the U.S. House of Representatives in 1872, and again in 1879, followed by serving in the U.S. Senate from 1881 to 1905.

The hand written letter, dated January 10, 1887 is on Senate Stationary and signed "Jos R Hawley". We also have a Stock Certificate for 100 shares of "American Exchange in Europe Ltd" at \$10.00 per share from 1881, signed by Hawley as President.



Lee Everett Mexico Watercolor

This lovely watercolor of a Mexican street scene with a church in the background was painted by a prominent Lehigh Valley architect Lee Everett. The painting shows the Church of Santa Prisca Taxco de Alarcon, a cathedral in Taxco, Mexico, which is architecturally distinctive and skillfully painted by Everett.

Both an artist and architect, Lee Everett won an award for his design of LCCC's Science-Technology building, now known as Science Hall. The Lehigh Carbon Community College owns a collection of his watercolors, normally on display on walls all over campus, and the college exhibited his work in the past.

Image size is 22" x 16", not including the linen mat and wooden frame.



Two Artini Engraved Tiles

These two Artini “Engravings” resemble tinted bas relief tiles, and were manufactured by Artini Arts, Inc. in the Bronx between 1950 and 1970. They are plaques made of a proprietary resin or acrylic that is “superior to Ivory or Carrara marble”, which is then sculpted or “Twin engraved.”

Subject matter included puppies, clowns, children, birds and flowers, or replicas of famous works of art, such as Pierre Auguste Cot’s “Springtime” or works by the Impressionists Renoir and Manet. Whimsical and unique.

Ours show a colonial girl with her hands clasped in prayer, and a colonial boy in profile holding a tri-corner hat. In good shape, framed.



Copperplate Engraving Plate with Medieval Peasants

This is something rarely seen: a copperplate for an illustration. It would have been used to print the art accompanying a newspaper article or book, and shows a group of peasants advancing through the woods with a spear.

Copper was the preferred metal to create line engravings, with its earliest use recorded from the 1430s. It was used until the 19th century, when steel was introduced for intaglio printmaking. An engraver needed artistic ability and the ability to work in reverse, since engravings produced a reverse print. Once the line was engraved, ink would be rolled over the plate, then wiped off, leaving ink only in the engraved lines. The plate and paper would be sandwiched together on the press, and the ink transferred to the paper.

The seven figures here are fascinating – each with a separate wary or tentative expression, showing the great skill of the artist and the engraver. A true curiosity and a reminder of how much work was involved to create an illustration plate.



Monumental Black Forest Wood Carving with Deer

This unusually large (32" tall) Black Forest carved wooden sculpture shows either an elk or deer at the top, with a female and baby below, surrounded by realistically carved boulders, tree stumps and foliage. The base is 16.5" x 8".

Black Forest carvings date back to the 1800s and started as a way for rural Swiss farmers to earn extra income. There is a school for woodcarving in Brienz, Switzerland that teaches using carving chisels and other traditional methods through an apprenticeship program. Many wood carving families continue the art today. It is unknown if this is Austrian, German or Swiss. These sculptures are rarely signed.



Dancing Elephant

Here's a joyful metal sculpture, very likely a commercial piece, as it is unsigned. Yet the artist has presented the elephant as a graceful dancer. With her trunk raised, her tail waving and balanced on two legs, she is a staff favorite and bound to bring a smile to your face.

Measures 11" high, 13" from trunk to tail, and 5" wide.



Antonio DeVity Italian Cityscape Oil Painting

This Venice cityscape oil painting is by the prolific Italian Impressionist painter Antonio DeVity (1901-1993).

Born in Reggio-Calabria, Italy, Antonio DeVity moved to Rome as an adult, the streets of Paris and canals of Venice became the focus of his work.

The painting of Venice shows Italians strolling along the canal, with a gondolier floating under the arched pedestrian bridge, lined by classic Venetian homes.

The image is 12" x 24" in a thick wooden frame, carved and painted gold.



Antonio DeVity Paris Oil Painting

Antonio DeVity painted Impressionist paintings of France and Italy, showing the historical buildings and scenic waterways from the early 1900s, before the devastation of WWII.

This Parisian scene shows the red roof and windmill of the famous Moulin Rouge Cabaret on Boulevard de Clichy, just after a rain. The sky is overcast, but the bright lights of the boulevard light the crowded street.

The image is 12" x 24" in a thick wooden gold frame.



Carved Wooden Man in Bas Relief

This unsigned carving shows a man with his hands clasped, hiding his mouth...whether he is reacting in horror, or suppressing a grin is open to interpretation. This dramatic and expressive work was the work of a talented artist, probably created in the 60s or 70s. The artist even partially carved the background,

Measures 12.5" wide x 24" tall in a narrow wooden frame.



Face Vase from The Tom Phelps Studio

Here's a guy with personality, and with a pedigree. This salt glazed stoneware Folk Art vase is from the Phelps Studio in the foothills of Appalachia. With his googley eyes, elongated nose and buck teeth, he will add humor to your most serious flower bouquet.

The Tom Phelps Studio in Floyd, VA is known Studio for whimsical and usable high-fired facepots that are microwave, oven, and dishwasher safe. Tom Phelps died in 2015, but he was known for mentoring teens. Tom opened his pottery studio to the teenaged community and taught them to create face pots, channeling their energy into something valuable and creative. His son Seth continues the tradition.

Signed PHELPS 1997 and JOSH on the bottom. 11" high x 4.5" wide.



Folk Art Stumpware Funeral Wreath

This is a true antique, a stumpwork funeral wreath dating from 1880-1890. In Victorian times, the deceased was honored with memorials that could include stitcheries, dried flower arrangements, paintings or photographs, or a funeral wreath made from yarn, wax flowers, paper mache, feathers or human hair.

Ours is a floral wreath in a shadow box, made from wool yarn flowers, beads and wire. The embroidery is stumpwork: embroidery built up so the flowers appear to be 3-D. The yarn would be hand-dyed, and is still vibrant in red, pink, gold, green and pastel shades. This wreath is truly a fascinating glimpse into long ago mourning rituals as well as an interesting work of art.

The shadow box is lined in black velvet and measures 21" x 21"; the image is 17" x 17".

Painted Wooden Folk Art Woman



This charming hand painted Victorian lady is a work by the folk artist Fran Poole. Here she's used a vintage newel post or finial to create a cheerful buxom Victorian woman, complete with a bow at her neckline and a bouquet of flowers.

16" tall and 6.25" wide, signed F. Poole.

Russian Samovar Brass



In Russia, preparing tea is quite different than in England. Instead of water heated on the stove, Russians used a samovar, or metal urn, often of brass, with a spigot near its base, to boil water for tea. In traditional samovars water is heated by means of a vertical tube, containing burning charcoal, running up the middle of the urn. A filled teapot is set atop the chimney to steep. Although they are no longer used as widely as they once were, the samovar has become a symbol of Russian hospitality and sociability as a central part of tea ceremony.

Ours is 18" high x 9" wide on a footed 5.5" square base. It's not perfect: it has a few surface dings and dents showing it was lovingly used. Engraved on the top is a cyrillic inscription and an emblem that appears to be a lion and a horse. Inscription is in Russian.

Mystic Forest Oil Painting



This lovely large forest painting is by the Austrian artist Eberhard Althoff and is signed “ALTHOFF” in the lower right corner. It shows a woodland brook meandering between tall leafy trees as the mist obscures the trees in the distance.

Eberhard Althoff was born shortly after the first World War in a small town in Lower Austria near Vienna. He studied at the Viennese Academy and trips led him throughout Europe, especially to Italy, Germany, Holland and France where he spent time practicing his craft. His generally naturalistic style was inspired by the famous impressionists. He is collected by Austrian connoisseurs and collectors, but his works also appear online:

The painting measures 25.5” x 35.5”, and is in a gold painted frame 30” x 42”.

Flower Sellers Oil Painting

This lovely urban landscape came in just in time to be included in this year’s auction. We’re calling it Flower Sellers, as it shows flower vendors on the banks of a canal on the outskirts of a (possibly Dutch) city. Two flower-laden boats are docked at the stone pier, with flowers surrounding their furled masts. The houses have stepped gables, a feature of Dutch Renaissance architecture, particularly in Amsterdam. The domed cathedral in the distance might be St. Nicolas Basilica, also in Amsterdam.



It’s a large oil, 23.5 high x 35.5” long, in a silvered frame 30 x 42”. Impressionistic in style, it’s a cheerful view of canal-side commerce in (perhaps) Amsterdam.



Rare African Ceremonial Mask

This is the most unusual and most valuable African mask that was ever donated to ReStore. Its forward facing ears and shallow incised eyes and carved mouth are truly unique.

It's a rare Bush Cow mask, worn by the Mumuye people of Nigeria during ceremonial dances. It is rarely seen in the USA. The Mumuye live in northeastern Nigeria between the cities of Jalingo and Zinna, in a region bounded by the bend of the Benue river and the Cameroon border. Estimated to number 100,000, the people cultivate sorghum, millet, and yams. They remained in near total isolation until 1959, when they were conquered by the English.

Mumuye customs include the use of masks in dances of initiation, funeral rituals, harvest celebrations, and in the vabo cult. The society is divided by age, and a mask was produced to symbolize their collective identity. These masks, which represented animals (in our case the bush cow), were called va or vabou and followers called themselves "sons of Va." The masks would dance at the time of sowing, harvesting, funerals, or other important events. Their statuary included incised lines may be shallow, average, or accentuated.



Contemporary Landscape

All the art that is featured at this sale has been donated to ReStore, thus we have no control over what we can offer. We get a nice assortment of original paintings, but this year we got very few nice abstracts. Then this one arrived just as the sale items were being finalized.

Normally we do not like to offer commercially produced art, but this large landscape struck us as nicely neutral contemporary abstract landscape to offer. It is colorful yet muted, and would complement almost any room décor. It's is framed and light weight (6.6 lbs), so easy to hang.

This unsigned painting measures 47.25" wide by 35.5" high



Duck Decoy by Ducks Unlimited

This is a Canvasback duck decoy from Ducks Unlimited. It is signed on the bottom by Tom Tabor, and has a gold “Encore Edition” seal.

It's a beautifully carved and painted duck on its own. We were unable to tell if it was hand carved by Tom Tabor, or how many ducks were created in the Encore Edition.





C. H. Slater Fruit Still Life

Charles Henry Slater

1820-1890

Born in 1820, British artist Charles Henry Slater flourished in the mid-nineteenth century. Slater was a realist, still life painter known for his representational depictions of fruits and flowers. Our Slater is a gouche painting of two apples and a plum. Its small – 8.25” x 5.75” high, and signed in the lower left C H Slater. Considering this was painted 200 years ago, it’s a surprisingly contemporary composition.

Slater exhibited at the Royal Society of British Artists, in London.

Abraham Herbe Dutch Impressionist Landscape

This impressive landscape is signed A Herbe, and shows a loosely rendered canal or stream with thatched roof dwellings under a moody, cloudy sky. Is that perhaps a windmill in the distance?

Abraham Herbe was an early 20th century Dutch Impressionist, known mostly for landscapes and seascapes. He exhibited in London from the 1930s to the 1950s. He is a master at color, technique and composition, as this oil painting shows.

Painting Image is 15.5” x 19.5” in a gold painted wooden frame.



Vincent Van Gogh Iris - reproduction

Painting by J. Garrah

A beautiful imitation of Vincent Van Gogh’s famous Impressionist irises painting.

Signed 'J. Garrah' by the artist. J. Garrah has painted in many styles, including nice reproductions of famous works of Impressionist and Post-Impressionist painters, including Van Gogh and Degas.

Image measures 23.5 x 19.5”, in a gold painted wooden frame measuring 30 x 25”





Taiwanese Glove Puppets

These four charming fabric Folk Art hand puppets are originally from Taiwan. Glove puppetry began in 17th century China. These finger or palm puppets are known as Potehi, which means “cloth bag opera”. They are used to tell folk tales and historical events.

We have four puppets, two women (one with a movable mouth!), a male and a warrior or deity with an exaggerated head and a beard, all clothed in their original costumes. The puppets have wooden or porcelain heads, palms and feet, while the body is created by the costume. Have fun telling your own family tales with these puppets.

Sold as one lot including all four puppets.



Joseph Stella Engravings

4 Etchings sold as a set

Joseph Stella (1877-1946) was an artist who experimented with a variety of approaches (ranging from Futurism to classic idealism) and techniques (including oils, pastels, and collage.) Originally from Italy, he came to NYC at age 19, and studied at the Art Students League, where he was classically trained in a Rembrandt style. He became an illustrator, but would later paint industrial and modern subjects, including paintings of the Brooklyn Bridge, Coney Island and Mardi Gras. His work can be found in most major museums, and was included in the 1939 World's Fair.

These etchings were done about 1900 and show his classical training. There are four etchings in the lot, measuring approximately 5.5" x 5"

Man in a Cap

The Bagpiper

Old Woman Reading a Book

Woman with Disheveled Hair and Shawl

Included are the label from the Rabin and Krueger Gallery that owned the plates and pulled an edition of 30 prints in 1958, after Stella's death The Museum of Modern Art and the Brooklyn each got a set.



Tom Stoenner Hand Blown Art Glass Vase

This beautiful Lusterware glass vase is from the Hudson Valley artist Tom Stoenner. The glaze is luminescent and primarily blue, with other iridescent colors. It measures 11.5" tall and 7" wide. Tom has hand blown glass for more than three decades in his scenic Hudson Valley studio. He is the recipient of the American Craft Museum Design Awards.



Mother and Child Sculpture by Jean T Kroeber

This large (and heavy) granite sculpture celebrates motherhood with a solid image of a mother embracing a child. It was created by New York sculptor Jean Taylor Kroeber, who died on Sept. 7, 2020. Jean was born in New York City on Jan. 7, 1929, grew up in Greenwich Village and was introduced to ancient Greek art that inspired her to become a sculptor. She studied at the Art Students League in New York. Jean worked in stone (mainly marble) and wood, and her figurative style was influenced by Greek and Romanesque carvings and the strong figures of Aristide Maillol and William Zorach.



Laundry in Venice

Watercolor

It's a nicely done watercolor of a Venice canal, showing laundry strung from building to building, with the family boats tied up below. A refreshing, slice-of-life change from the more common views of Venice. Imagine doing laundry in this romantic setting!

Image size is 15" x 28". Frame is 23: x 36".

Illegible signature



Beautiful 100 Year Old Painting

This bucolic painting has caused us sleepless nights, due to its illegible signature. In the art world, an unsigned or unreadable signature means the painting cannot be attributed to a particular artist, thus the value is adversely affected.

So we judge this oil painting on its merits. And it is beautiful. It's a calm pastoral scene, with nicely rendered trees and sky, and a few cows in the distance. The shadows are perfectly placed. The colors are lovely. The only thing problematic is the artist's signature.

Image measures 31" w x 21" h, in a gold painted wooden frame measuring 34" x 24"
The painting is signed in lower right J M Zam---? There is a Colombian painter, Jesús María Zamora (1875-1949), who painted primarily landscapes similar to this one, but our gallery experts could not confirm it or assign a value. We will leave it to you to decide.